



interchim®

puriFlash® XS
420

35.
5





User-Friendly / Techno-Quality

STRENGTH



puriFlash® XS 420

Compact

Affordable





interchim®

puriFlash® XS 420

300 ml/min @
20bar

up to 2x optimum flow rate of F300 column



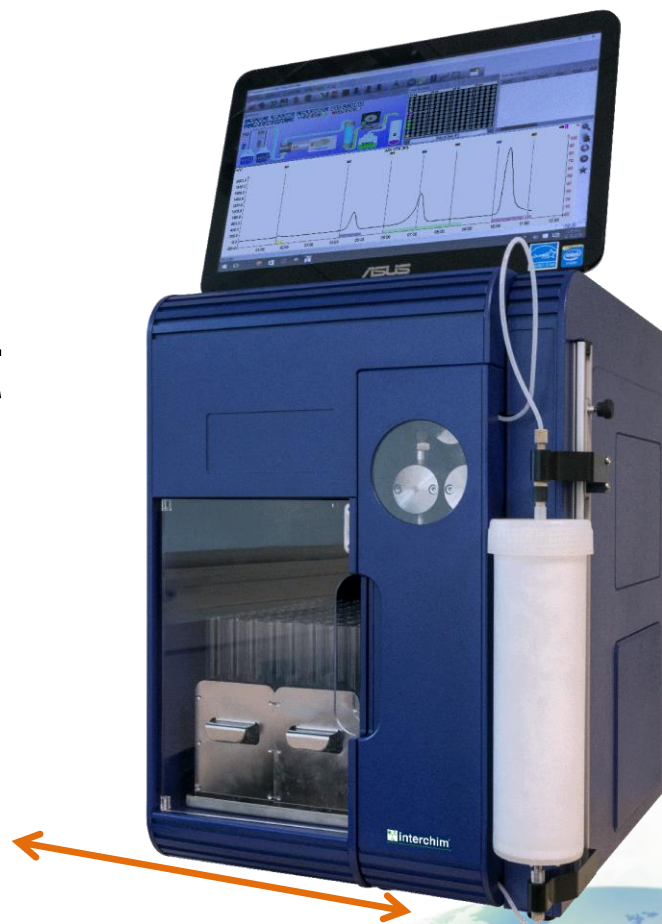


puriFlash[®] XS 420

35.5 cm
14"

The smallest footprint
on the market

USP - Fume Encloser
Let your fumehood free for
Chemistry





interchim®

puriFlash® XS 420

15" Touch Screen – Windows 10 Pro

Initial waste
(to avoid cross contamination with previous run)

2 racks
56 standard tubes 18 x150mm/rack
(Biotage: 112tubes; Isco: 140tubes)



Integrated solvent tray

Direct access to UV lamp & flow cell

Integrated column holder up to 300g format



XS 420



2 solvants – Binary
 UV : 200-400 nm +
 Scan
 No PC
 (licence included)

XS 420+



4 solvants – Quaternary
 + Air
 UV : 200-400 nm +
 Scan
 PC
 Fume Enclosure
 Ready-to-use

XS 420 Ultra



Optimum
 +
 UV : 200-600 nm +
 Scan
 2 positions /6 ways
 electrical injection valve

**XS
420**



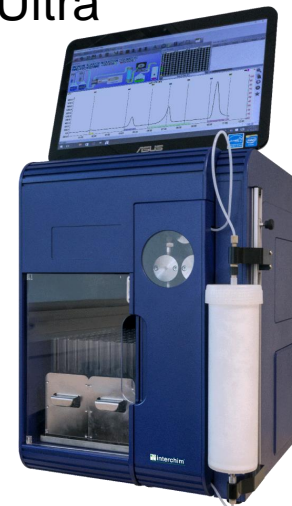
220v - P/N :
1R5870
110v - P/N :
1R5871

XS 420+



220v - P/N :
1R1070
110v - P/N :
1R1071

**XS 420
Ultra**



220v - P/N :
1R5880
110v - P/N :
1R5881



interchim

211 bis avenue JF Kennedy – BP1140 – 03100 Montluçon France

Tel. +33 4 70 03 88 55 – Fax +33 4 70 03 82 60

interchim@interchim.com – www.interchim.com